

TREK Vet Update

Volume 3, Number 2

Fall 2006

User Experiences with the New SWIN® Epidemiology Software

By Joan Lamprecht, Associate Product Manager, TREK Diagnostic Systems

Since its release this spring, our new SWIN Epidemiology Software has been put to use at several veterinary facilities. We are pleased to share some comments we have received.

Brenda Love, DVM, PhD, from the Animal Diagnostic Laboratory at Pennsylvania State University in State College, PA has been a long time Sensititre® user. She had previously used Sensititre products at UC Davis and the Ohio Department of Agriculture. Her current laboratory is one of three that comprise the Pennsylvania Animal Diagnostic Lab Services Group (PADLS). They are all Sensititre/SWIN customers.

Dr. Love is working on a paper on antimicrobial susceptibility patterns of mastitis pathogens and recently co-authored a presentation for the American Dairy Science Association. She had started collecting her data before the installation of her SWIN Epidemiology Software. She and her associates spent countless hours organizing data for her percent susceptible report using a purchased data analysis program. She compares the time spent on that process with the few moments it takes using the SWIN Epidemiology Software.

“Doing retrospective analysis of susceptibility data with the SWIN Epidemiology Module is very quick and easy. The program is straightforward to use; you just pick which organism and species from which it was cultured, or which drugs,

plates, date ranges, etc. The report is complete in minutes. It is very easy to export the report into other programs (Excel, PowerPoint, etc) for further manipulation or presentations.”

Tim Klinefelter, Microbiology Manager and Veterinary Specialist at the Veterinary Diagnostic Laboratory at Iowa State University, in Ames, IA worked with TREK as a limited release site during the new Epidemiology program testing phase. His laboratory tested close to 8,000 organisms in the last year. Mr. Klinefelter appreciates the ability to run annual reports quickly without prolonged interruption of their laboratory's workflow.

Iowa State's epidemiology information is shared on their website for use by diagnosticians, pathologists, and pharmaceutical companies. The information is often used in studies and additional publications.

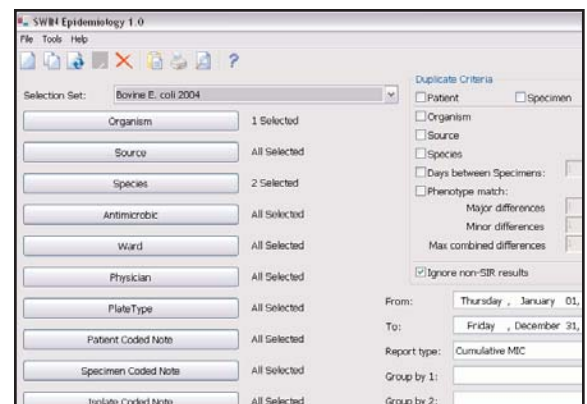
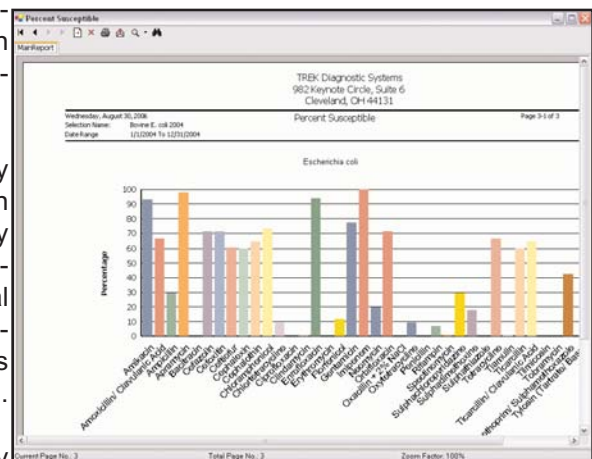
The SWIN Epidemiology Software will allow his laboratory to export data directly to their website, bypassing their LIM systems' limitations, and their IT department in the process. They recognize the advantages of having a software system designed specifically for the microbiology laboratory.

According to Mr. Klinefelter, “I like the ability to turn the chart portion of the report on or off as needed. Our percent sus-

ceptible reports, by species, are just so fast. We also appreciate that we are not limited in the number of Salmonella and Actinobacillus serotypes we can include in one report.”

Please stop by and see us at the upcoming AAVLD meeting in Minneapolis to see all that the SWIN Epidemiology program has to offer!

If you won't be at the AAVLD meeting, feel free to contact your Area Account Manager for details on how you can put SWIN Epidemiology Software to use in your laboratory!



2 Experiences with New *para-JEM*® Windows® Software

By Troy Farrell, Ohio Department of Agriculture, Animal Disease Diagnostic Laboratory

With the assistance of the Technical Support group at TREK Diagnostic Systems, our laboratory's transition from HEY to the *para-JEM*®/ESP® Culture System II for Johne's fecal culture was a seamless one.

After a brief trial period using one ESP Culture System II instrument, we moved to *para-JEM* full time – adding six more units – in June of 2005. Within five months we reached capacity in those units, and last November we acquired two more, bringing our current total to nine ESP instruments. Currently, we test an average of 500-650 samples per week, so you can imagine our elation this past June when we received the new *para-JEM* Windows Software!

Our weekly specimen numbers have increased substantially over the last two years.

For some time Ohio has had a Johne's Status Herd program, and recently we adopted the RiskAssessment/Management Program (RAMP), which provides free Johne's testing for cattle owners who perform a risk assessment of their farm and adopt standardized management practices.

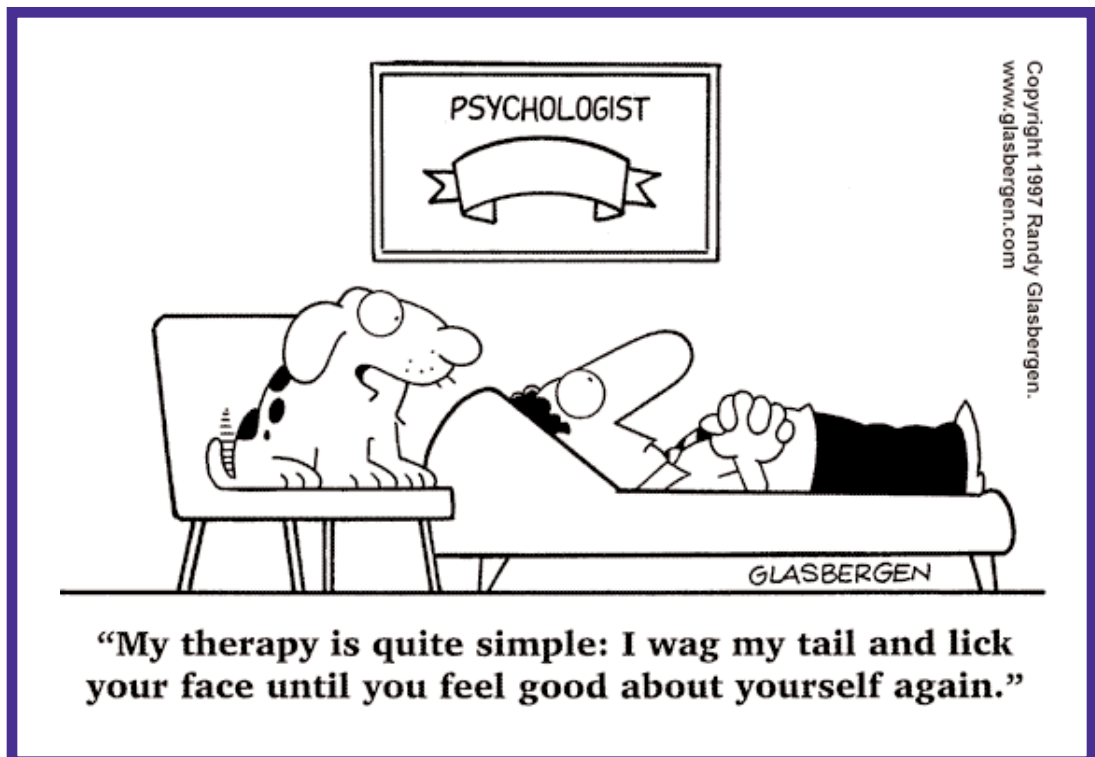
Our State veterinarians have done an outstanding job educating practitioners and owners across Ohio. The results of their efforts is reflected in our specimen numbers and, hopefully, in the eventual decrease in the incidence of Johne's on our farms.

In the meantime, our brief experience with the *para-JEM* Windows software has been fantastic. The expansive report fields allow us to input our acid-fast and PCR results so that all of our testing information is localized on one plat-

form. With this capability it will be much easier to perform case studies to assess the status and progress of individual farms.

TREK's Technical Support and R&D managers are available 24/7 to assist with any questions that may arise. For example, upon installing the new software we noticed a large percentage of bottles signaling positive within a few hours of incubation. After dialing into our system, TREK Technical Support quickly discovered an enabled pre-incubation algorithm that needed to be disabled. A few clicks resolved the problem, and our instruments are running smoothly.

Thanks TREK, for all your assistance, and for the new software!



Something New and Exciting – The VersaTREK® System for Veterinary Applications!

By DeAna Paustian, Global VersaTREK Product Manager, TREK Diagnostic Systems

At TREK Diagnostic Systems, we strive to provide our customers with the most user-friendly, comprehensive and intuitive automated Johne's system available in the marketplace today. We have given ourselves the task of improving upon an already great *para*-JEM system by providing an option that will help the veterinary Johne's labs increase productivity. Our solution: the VersaTREK Automated Microbial Detection System! Now you have the option to upgrade to the VersaTREK System or to maintain your existing testing platform!

The VersaTREK System was introduced to the clinical market in August of 2003. It has received a very warm welcome in the marketplace and we are proud of our many ESP to VersaTREK conversions as well as our competitive conversions. This robust and easy to use instrument has proven itself in the clinical marketplace and now we are ready to show this to our valued veterinary partners.

The VersaTREK System utilizes the same unique technology and *para*-JEM media as the ESP instrument; however, the VersaTREK System offers the following:

Enhanced ergonomics and workflow

One Touch LCD Screen

Powerful barcode scanner

Easy accessioning through the barcode printer

144 more locations than the ESP 384

Operators of the VersaTREK System will notice very quickly that from one position the user has access to all drawers and bottles ensuring easy placements of the bottles. Drawers are easy to open and the powerful barcode scanner allows for one-handed easy motion bottle handling. The multiple status LED indicators on the drawers and locations make bottle management simple!

The VersaTREK System for Veterinary Application is compatible with the *para*-JEM Window Software so the same great PC functionality has been retained. We have added functionality in the form of a barcode generator to make the sample accession even faster.

Come see us at the 2006 AAVLD meeting in Minneapolis, MN. We would love to give you a demonstration of this one of a kind instrument and obtain your input.

There's nothing standard about the VersaTREK System for Veterinary Applications ... Designed for better recovery, simple ease of use, improved sample management, and greater value!



New Bovine Porcine Plate with Tulathromycin

By Joan Lamprecht, Associate Product Manager, TREK Diagnostic Systems

We are pleased to announce the availability of our new Bovine/Porcine plate (Part No. BOPO6F).

Tulathromycin (DRAXXIN®, Pfizer Animal Health) is now available on this new plate. DRAXXIN® is part of a new class of macrolide, triamilides, and is given in a single dose for the treatment or prevention of Bovine Respiratory Disease (BRD).

Recently, the CLSI Subcommittee on Veterinary Antimicrobial Susceptibility has approved interpretive standards for *Tulathromycin* vs., *Mannheimia haemolytica*, *Pasteurella multocida*, and *Histophilus somni* in Bovine Respiratory Disease.

Over the past few months TREK has worked closely with our customers to ensure the new format would meet their

laboratory needs. We thank you for your response to our inquiries in the design process of this new plate.

Earlier this year, our Sensititre® SWIN® users also received a new software update, incorporating the ability to perform automated readings on this fastidious organism group. Previously, the isolates had manual reading options only. Now laboratories can use the ARIS 2X® (V3090) or AutoReader (V3029) Systems to read most fastidious organisms. We hope to increase your laboratory's ability to serve the veterinary community with the availability of Tulathromycin and automated read options.

Please see the plate format below, and remember, you can view all of our plate formats at www.trekds.com. Simply go to Products, Sensititre Veterinary,

and click on Veterinary Plate Formats, or just enter the following link to go directly to this page:

http://www.trekds.com/products/sensititre/vet_pltformats.asp

BOPO6F Plate Format												
	1	2	3	4	5	6	7	8	9	10	11	12
A	TIO 8	TIA 32	CTET 8	OXY 8	PEN 8	AMP 16	DANO 1	SXT 2/38	TYLT 4	TUL 4	CLI 16	SDM 256
B	TIO 4	TIA 16	CTET 4	OXY 4	PEN 4	AMP 8	DANO 0.5	SPE 64	TYLT 2	TUL 2	CLI 8	ENRO 2
C	TIO 2	TIA 8	CTET 2	OXY 2	PEN 2	AMP 4	DANO 0.25	SPE 32	TYLT 1	TUL 1	CLI 4	ENRO 1
D	TIO 1	TIA 4	CTET 1	OXY 1	PEN 1	AMP 2	DANO 0.12	SPE 16	TYLT 0.5	TIL 64	CLI 2	ENRO 0.5
E	TIO 0.5	TIA 2	CTET 0.5	OXY 0.5	PEN 0.5	AMP 1	NEO 32	SPE 8	TUL 64	TIL 32	CLI 1	ENRO 0.25
F	TIO 0.25	TIA 1	TIA 0.5	GEN 16	PEN 0.25	AMP 0.5	NEO 16	TYLT 32	TUL 32	TIL 16	CLI 0.5	ENRO 0.12
G	GEN 8	GEN 4	GEN 2	GEN 1	PEN 0.12	AMP 0.25	NEO 8	TYLT 16	TUL 16	TIL 8	CLI 0.25	POS
H	FFN 8	FFN 4	FFN 2	FFN 1	FFN 0.5	FFN 0.25	NEO 4	TYLT 8	TUL 8	TIL 4	POS	POS

ANTIMICROBICS	
TIO	Ceftiofur
TIA	Tiamulin
CTET	Chlortetracycline
GEN	Gentamicin
FFN	Florfenicol
OXY	Oxytetracycline
PEN	Penicillin
AMP	Ampicillin
DANO	Danofloxacin
SDM	Sulphadimethoxine
NEO	Neomycin
SXT	Trimethoprim / sulfamethoxazole
SPE	Spectinomycin
TYLT	Tylosin tartrate
TUL	Tulathromycin
TIL	Tilmicosin
CLI	Clindamycin
ENRO	Enrofloxacin
POS	Positive Control

The VersaTREK® System for Veterinary Applications Quiz

We are proud to introduce The VersaTREK Automated Microbial Detection System to the veterinary market at the 2006 AAVLD in Minneapolis, MN.

To make things a little fun, we encourage all of you to take this quiz regarding the VersaTREK System. Bring the completed form with you to the TREK booth at AAVLD for demonstration of the new VersaTREKSystem. All completed forms will be entered into a drawing for a \$100 American Express gift card!

(Hint: You should read the cover article before taking this quiz!)

1. When was the VersaTREK System introduced to the clinical market?
2. The VersaTREK System uses a different technology than the ESP® Culture System II. *(Circle one.)*
True
False
3. The VersaTREK System offers _____ more locations than the ESP Culture System II.
4. The VersaTREK System is compatible with the *para-JEM® Windows® Software.* *(Circle one.)*
True
False
5. Name one of the numerous benefits that the user will experience when using the VersaTREKSystem.

Name: _____

Institution: _____

Address: _____

City: _____ State: _____ Zip: _____

Phone Number: _____

E-mail Address: _____

Copyright 2004 by Randy Glasbergen.
www.glasbergen.com



**“Tiger, I think you’re a victim of identity theft.
There are thousands of cats with the same name as you!”**

TREK
DIAGNOSTIC SYSTEMS

982 Keynote Circle, Suite 6
Cleveland, Ohio 44131

800-871-8909

www.trekds.com

Inside this issue:

*The VersaTREK System for
Veterinary Applications*

New Bovine/Porcine Plate

*SWIN Epidemiology User
Experiences*

Quiz to Win \$100 Gift Card

*para-JEM Windows Software
Testimonial*